

Luís Álvares Pinto (1719-1789)

Pater mi (Moteto nº 1)

Editoração: Thadeu de Moraes Almeida

Coletânea: 7 Motetos para os sermões da Quaresma

flautas, coro, contrabaixo
(*flutes, choir, double bass*)

Partes:

[Flauta 1](#)

[Flauta 2](#)

[Soprano 1](#)

[Soprano 2](#)

[Baixo](#)

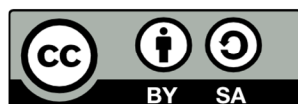
[Coro \(parte\)](#)

[Contrabaixo](#)

8 p.



9 790696 504678



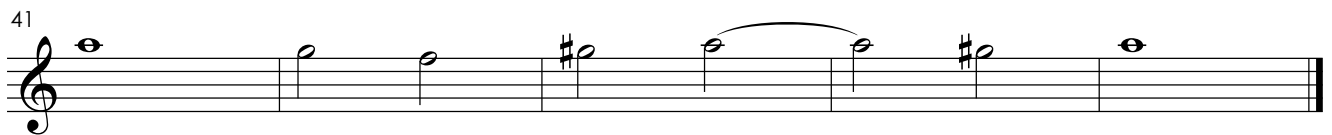
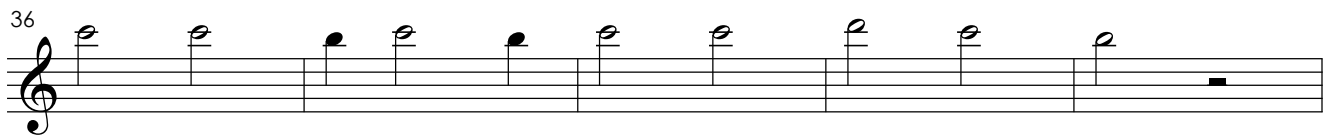
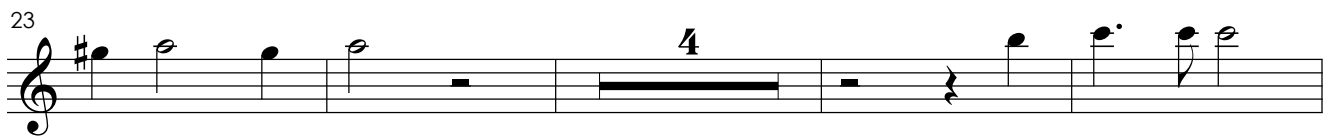
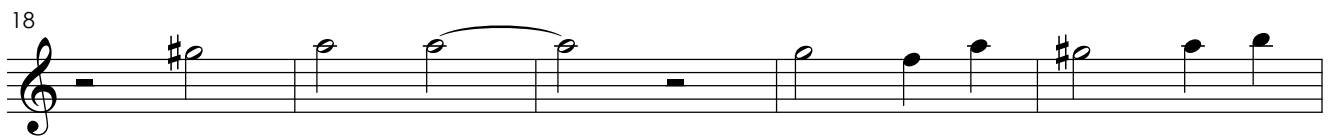
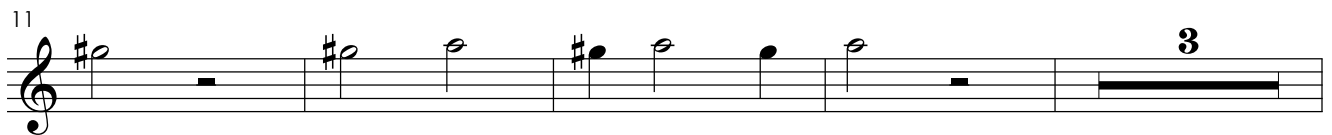
MUSICA BRASILIS

Pater mi (moteto nº 1)

Flauta 1

Luís Álvares Pinto

Adagio

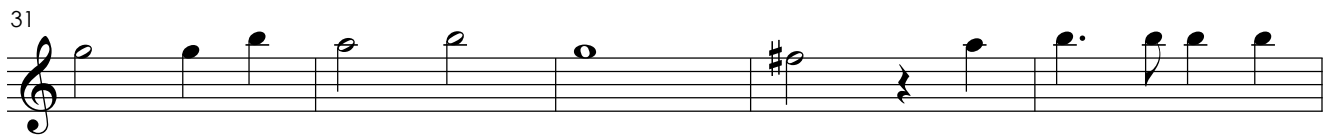
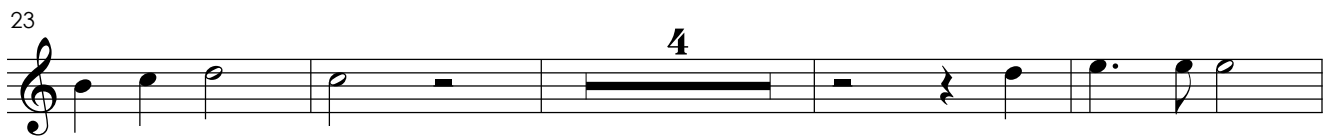
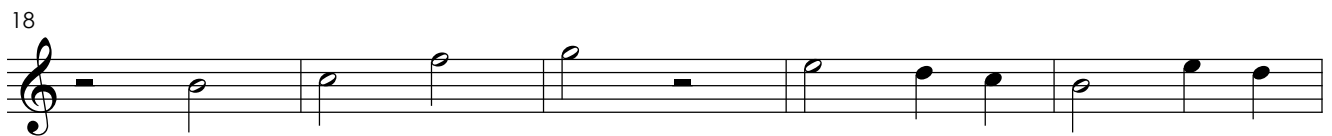


Pater mi (moteto nº 1)

Flauta 2

Luís Álvares Pinto

Adagio



Pater mi (moteto nº 1)

Soprano 1

Luís Álvares Pinto

Adagio

Pa - ter mi, Pa - ter mi, Si pos -

6
si - bi - le est tran - se - at, tran - se - at a

11
me ca - lix is - te Pa - ter

16
mi si pos - si - bi - le est, si pos - si - bi - le est

21
tran - se - at a me ca - lix is - te ve - run - ta - men non

26
si - cut e - go vo - lo ve - run - ta - men

31
non si - cut e - go vo - lo, ve - rum - ta - mem non

36
si - cut e - go vo - lo sed si - cut tu,

41
sed si - cut, sed si - cut tu.

Pater mi (moteto nº 1)

Baixo

Luís Álvares Pinto

Adagio

Pa - ter mi, Pa - ter mi, Si pos -

6

si - bi - le est tran - se - at, tran - se - at a

11

me ca - lix is - te

18

si pos - si - bi - le est tran - se - at a me ca - lix

23

is - te ve - run - ta - men

31

non si - cut e - go vo - lo, ve - rum - ta - mem non

36

si - cut e - go vo - lo sed si - cut tu,

41

sed si - cut, si - cut tu.

Pater mi (moteto nº 1)

Coro

Luís Álvares Pinto

Adagio

Soprano 1

Pa - ter mi, Pa - ter mi, Si pos - si - bi - le

Soprano 2

Pa - ter mi, Pa - ter mi, Si pos - si - bi - le

Baixo

Pa - ter mi, Pa - ter mi, Si pos - si - bi - le

7

est tran - se - at, tran - se - at a me ca - lix

est tran - se - at, tran - se - at a me ca - lix

est tran - se - at, tran - se - at a me ca - lix

13

is - te Pa - ter mi si pos - si - bi - le est, si pos -

is - te Pa - ter mi si pos - si - bi - le est, si pos -

is - te si pos -

19

si - bi - le est tran - se - at a me ca - lix is - te ve -

si - bi - le est tran - se - at a me ca - lix is - te ve -

si - bi - le est tran - se - at a me ca - lix is - te

25

run - ta - men non si - cut e - go vo - lo ve - run - ta - men

run - ta - men non si - cut e - go vo - lo ve - run - ta - men

ve - run - ta - men

31

non si - cut e - go vo - lo, ve - rum - ta - mem non

non si - cut e - go vo - lo, ve - rum - ta - mem non

non si - cut e - go vo - lo, ve - rum - ta - mem non

36

si - cut e - go vo - lo sed si - cut tu,

si - cut e - go vo - lo sed si - cut tu,

si - cut e - go vo - lo sed si - cut tu,

41

sed si - cut, sed si - cut tu.

sed si - cut, si - cut tu.

sed si - cut, si - cut tu.

Pater mi (moteto nº 1)

Contrabaixo

Luís Álvares Pinto

Adagio

