

# Paulino Chaves (1883–1948)

## Momento musical

Sobre obra de Franz Schubert

B12

Editoração: Thiago Rocha; Marcos Pantaleoni

orquestra  
(*orchestra*)

Partes:

[Flauta 1 – p.1](#)

[Flauta 2 – p.3](#)

[Clarinete em Sib 1 – p.5](#)

[Clarinete em Sib 2 – p.7](#)

[Trompa em Fá 1 – p.9](#)

[Trompa em Fá 2 – p.11](#)

[Tímpanos – p.13](#)

[Violinos 1 – p.15](#)

[Violinos 2 – p.17](#)

[Violas – p.19](#)

[Violoncelos – p.21](#)

[Contrabaixos – p.23](#)

23 p.



MUSICA BRASILIS



# Momento musical

B12 – sobre obra de Franz Schubert

Paulino Chaves

**Allegro Moderato**

2 4

11 a2 2

19 4

27 4

35

41 4

49



# Momento musical

B12 – sobre obra de Franz Schubert

Paulino Chaves

**Allegro Moderato**

2 4

9 a2 > > 2

19 4

27 4

35

41 4

49



# Momento musical

B12 – sobre obra de Franz Schubert

Paulino Chaves

**Allegro Moderato**

2 1. 2

9 4 2

19

27 1.

31 2 2 2

41 *dim.* 2

48 2





# Momento musical

B12 – sobre obra de Franz Schubert

Paulino Chaves

## Allegro Moderato

First musical staff, measures 1-10. It begins with a treble clef, a key signature of two flats (Bb and Eb), and a 2/4 time signature. The music starts with a whole rest, followed by a double bar line. The first measure has a '2' above it. The second measure has two accents (>) over the notes. The third measure has a quarter rest, a quarter note, and a quarter rest. The fourth measure has two accents (>) over the notes. The fifth measure has a '2' above it. The piece ends with a double bar line and repeat dots.

Second musical staff, measures 11-18. It begins with a treble clef, a key signature of two flats, and a 2/4 time signature. The first measure has a '4' above it. The second measure has two accents (>) over the notes. The third measure has a sharp sign (#) above the first note and a slur over the next three notes. The fourth measure has a '2.' above it and a slur over the notes. The fifth measure has a 'pp' dynamic marking below it. The piece ends with a double bar line and repeat dots.

Third musical staff, measures 19-26. It begins with a treble clef, a key signature of two flats, and a 2/4 time signature. The first measure has two accents (>) over the notes. The second measure has a quarter note and a quarter rest. The third measure has two accents (>) over the notes. The fourth measure has a quarter note and a quarter rest. The fifth measure has a quarter note and a quarter rest. The sixth measure has a quarter note and a quarter rest. The seventh measure has a quarter note and a quarter rest. The eighth measure has a quarter note and a quarter rest. The ninth measure has a quarter note and a quarter rest. The tenth measure has a quarter note and a quarter rest. The piece ends with a double bar line and repeat dots.

Fourth musical staff, measures 27-33. It begins with a treble clef, a key signature of two flats, and a 2/4 time signature. The first measure has a whole rest. The second measure has two accents (>) over the notes. The third measure has a quarter rest, a quarter note, and a quarter rest. The fourth measure has two accents (>) over the notes. The fifth measure has a '2' above it. The sixth measure has a '2' above it. The piece ends with a double bar line and repeat dots.

Fifth musical staff, measures 34-40. It begins with a treble clef, a key signature of two flats, and a 2/4 time signature. The first measure has a quarter note and a quarter rest. The second measure has a '2' above it. The third measure has a quarter note and a quarter rest. The fourth measure has a quarter note and a quarter rest. The fifth measure has a quarter note and a quarter rest. The sixth measure has a '2' above it. The piece ends with a double bar line and repeat dots.

Sixth musical staff, measures 41-46. It begins with a treble clef, a key signature of two flats, and a 2/4 time signature. The first measure has a 'dim.' dynamic marking above it. The second measure has a quarter note and a quarter rest. The third measure has a quarter note and a quarter rest. The fourth measure has a quarter note and a quarter rest. The fifth measure has a quarter note and a quarter rest. The sixth measure has a quarter note and a quarter rest. The seventh measure has a '2' above it. The piece ends with a double bar line and repeat dots.

Seventh musical staff, measures 47-54. It begins with a treble clef, a key signature of two flats, and a 2/4 time signature. The first measure has a quarter note and a quarter rest. The second measure has a quarter note and a quarter rest. The third measure has a '2' above it. The fourth measure has a quarter note and a quarter rest. The fifth measure has a quarter note and a quarter rest. The sixth measure has a quarter note and a quarter rest. The seventh measure has a quarter note and a quarter rest. The eighth measure has a quarter note and a quarter rest. The piece ends with a double bar line and repeat dots.



# Momento musical

B12 – sobre obra de Franz Schubert

Paulino Chaves

**Allegro Moderato**

1.

*pp*

9 1. 6

19 2.

27

32 1.

39 1. *dim.*

46



# Momento musical

B12 – sobre obra de Franz Schubert

Paulino Chaves

**Allegro Moderato**

4

*pp*

9 2 2.

19 2.

27

32 4

*dim.*

39 2

46



# Momento musical

B12 – sobre obra de Franz Schubert

Paulino Chaves

**Allegro Moderato**

2 6 8

*pp*

19 4

*pp*

27 14

41 *dim.*

45

50





# Momento musical

B12 – sobre obra de Franz Schubert

Paulino Chaves

Allegro Moderato

2



*dim.*



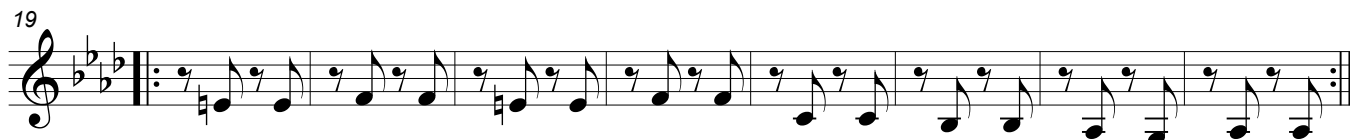


# Momento musical

B12 – sobre obra de Franz Schubert

Paulino Chaves

**Allegro Moderato**



*dim.*





# Momento musical

B12 – sobre obra de Franz Schubert

Paulino Chaves

**Allegro Moderato**



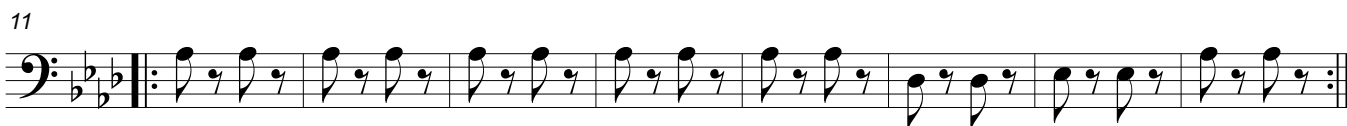


# Momento musical

B12 – sobre obra de Franz Schubert

Paulino Chaves

**Allegro Moderato**







# Momento musical

B12 – sobre obra de Franz Schubert

Paulino Chaves

**Allegro Moderato**

2 4 pizz.

10 5 2

19 arco pizz.

*f*

27 4 *pp*

35

41 *dim.*

48