

Samuel Pereira de Almeida (1853-1892)

Polca

Editoração: Bruno Bokelmann

Instituição: Filarmônica Nossa Senhora da Conceição (Sergipe)

banda
(band)

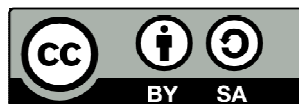
Partes:

Clarinetas 1 em Sib
Clarinetas 2 em Sib
Clarinetas 3 em Sib
Trompete 1 em Sib
Trompete 2 em Sib
Trombone 1
Trombone 2
Trombone 3
Tuba 1
Tuba 2
Bumbo

11 p.



9 790696 507310



MUSICA BRASILIS

Polca

Clarineta 1 em Si \flat

Samuel P. de Almeida

Introdução

f

8

p

Polca

15

1. 2.

21

ff

27

p

Coda

33

1. 2. *Fine*

39

p

Trio

45

45

51

D.S. al Fine

Polca

Clarineta 2 em Si \flat

Samuel P. de Almeida

Introdução

f

7

Polca

p

15

1. 2.

21

ff

27

Coda

1. 2. *p*

34

1. 2. *Fine* **Trio** *p*

41

48

49

D.S. al Fine

Polca

Clarineta 3 em Si \flat

Samuel P. de Almeida

Introdução

f

7

p Polca

15

1. 2.

21

ff

27

1. 2. Coda *p*

34

1. 2. *Fine* Trio *p*

41

49

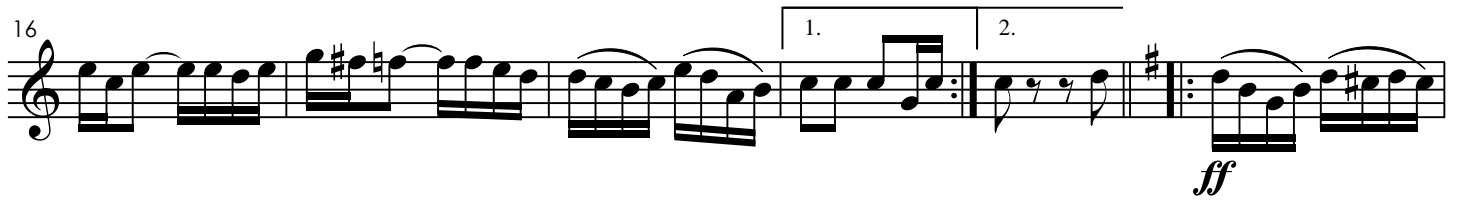
D.S. al Fine

Polca

Trompete 1 em Si \flat

Samuel P. de Almeida

Introdução

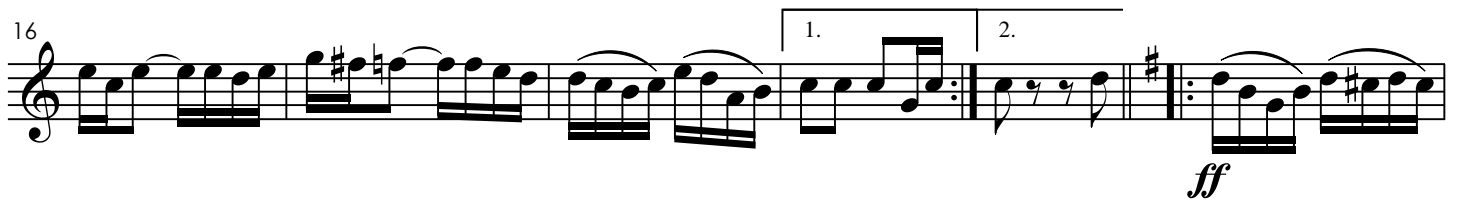


Polca

Trompete 2 em Si \flat

Samuel P. de Almeida

Introdução



Polca

Trombone 1

Samuel P. de Almeida

Introdução

Musical notation for the Introduction section, measures 1-8. The key signature is one flat (B-flat), and the time signature is 2/4. The music is marked *f* (forte). It consists of eighth and sixteenth notes.

Musical notation for the Polca section, measures 9-18. The key signature is one flat (B-flat), and the time signature is 2/4. The music is marked *p* (piano). It features a repeat sign with first and second endings, and accents (>) over the notes. The section is labeled "Polca" with a stylized symbol.

Musical notation for the Polca section, measures 19-25. The key signature is one flat (B-flat), and the time signature is 2/4. The music is marked *ff* (fortissimo). It features a repeat sign with first and second endings.

Musical notation for the Coda section, measures 26-33. The key signature is one flat (B-flat), and the time signature is 2/4. The music is marked *p* (piano). It features a repeat sign with first and second endings, and accents (>) over the notes. The section is labeled "Coda".

Musical notation for the Trio section, measures 34-41. The key signature is one flat (B-flat), and the time signature is 2/4. The music is marked *p* (piano). It features a repeat sign with first and second endings, and accents (>) over the notes. The section is labeled "Trio".

Musical notation for the Trio section, measures 42-48. The key signature is one flat (B-flat), and the time signature is 2/4. The music is marked *p* (piano). It consists of eighth and sixteenth notes.

Musical notation for the Trio section, measures 49-56. The key signature is one flat (B-flat), and the time signature is 2/4. The music is marked *p* (piano). It consists of eighth and sixteenth notes. The section ends with "D.S. al Fine".

Polca

Trombone 2

Samuel P. de Almeida

Introdução

f

9

p

19

ff

27

p

36

p

42

49

D.S. al Fine

Polca

Trombone 3

Samuel P. de Almeida

Introdução

f

9

Polca

p

19

ff

27

Coda

p

36

p

Trio

42

49

D.S. al Fine

Polca

Tuba 1

Samuel P. de Almeida

Introdução

Musical notation for the Introduction section, measures 1-7. The piece is in 2/4 time with a key signature of one flat (B-flat). The dynamics are marked *f* (forte). The notation includes eighth notes, quarter notes, and half notes, with some notes beamed together.

8

Polca

Musical notation for the Polca section, measures 8-16. The dynamics are marked *p* (piano). The notation includes quarter notes, eighth notes, and half notes, with some notes beamed together.

17

Musical notation for the Polca section, measures 17-23. The dynamics are marked *ff* (fortissimo). The notation includes quarter notes, eighth notes, and half notes, with first and second endings indicated by bracketed lines.

24

Coda

Musical notation for the Coda section, measures 24-31. The dynamics are marked *p* (piano). The notation includes quarter notes, eighth notes, and half notes, with first and second endings indicated by bracketed lines.

32

Musical notation for the Coda section, measures 32-38. The dynamics are marked *p* (piano). The notation includes quarter notes, eighth notes, and half notes, with first and second endings indicated by bracketed lines. The section ends with the word *Fine*.

39

Trio

Musical notation for the Trio section, measures 39-45. The dynamics are marked *p* (piano). The notation includes quarter notes, eighth notes, and half notes.

46

D.S. al Fine

Musical notation for the D.S. al Fine section, measures 46-52. The dynamics are marked *p* (piano). The notation includes quarter notes, eighth notes, and half notes.

Polca

Tuba 2

Samuel P. de Almeida

Introdução

f

8

Polca $\frac{2}{4}$

p

17

ff

25

p

32

Fine

39

Trio

p

47

D.S. al Fine

Polca

Bumbo

Samuel P. de Almeida

Introdução

2

1

1

8

Polca $\frac{2}{4}$

7

1. 1

2. 1

21

1. 1

2. 1

30 **Coda** 4 *Bumbo só toca na 2ª vez*

1. 1

2. *Fine*

39 **Trio** 12 *D.S. al Fine*